

LIQTECH



OIL & GAS

FROM PRODUCED WATER TO REUSABLE WATER – IN ONE STEP

Absolute barrier – even in upset conditions

The Challenge of Produced Water Today

Produced water is no longer just a by-product – it’s one of the most pressing operational and environmental challenges in oil & gas.

For operators, the pressure is relentless. Every barrel of oil brings more water than the last. Regulators are tightening discharge limits, and the cost of being out of compliance can run into hundreds of thousands of dollars per day. Disposal routes that once seemed reliable, like truck-outs and deep well injection, are becoming prohibitively expensive and politically unsustainable.

At the same time, conventional treatment systems struggle to keep up. DAFs and similar technologies often fail under high TDS, oil spikes, and elevated temperatures, creating downtime and costly cleanups. Beyond the operational headaches, there is the growing demand from communities and investors to show that water is being managed sustainably and responsibly.

In short, the challenge isn’t simply cleaning water. It’s about keeping production flowing, avoiding shutdowns and fines, and maintaining control over costs in the harshest conditions.

A Solution Built for Reality

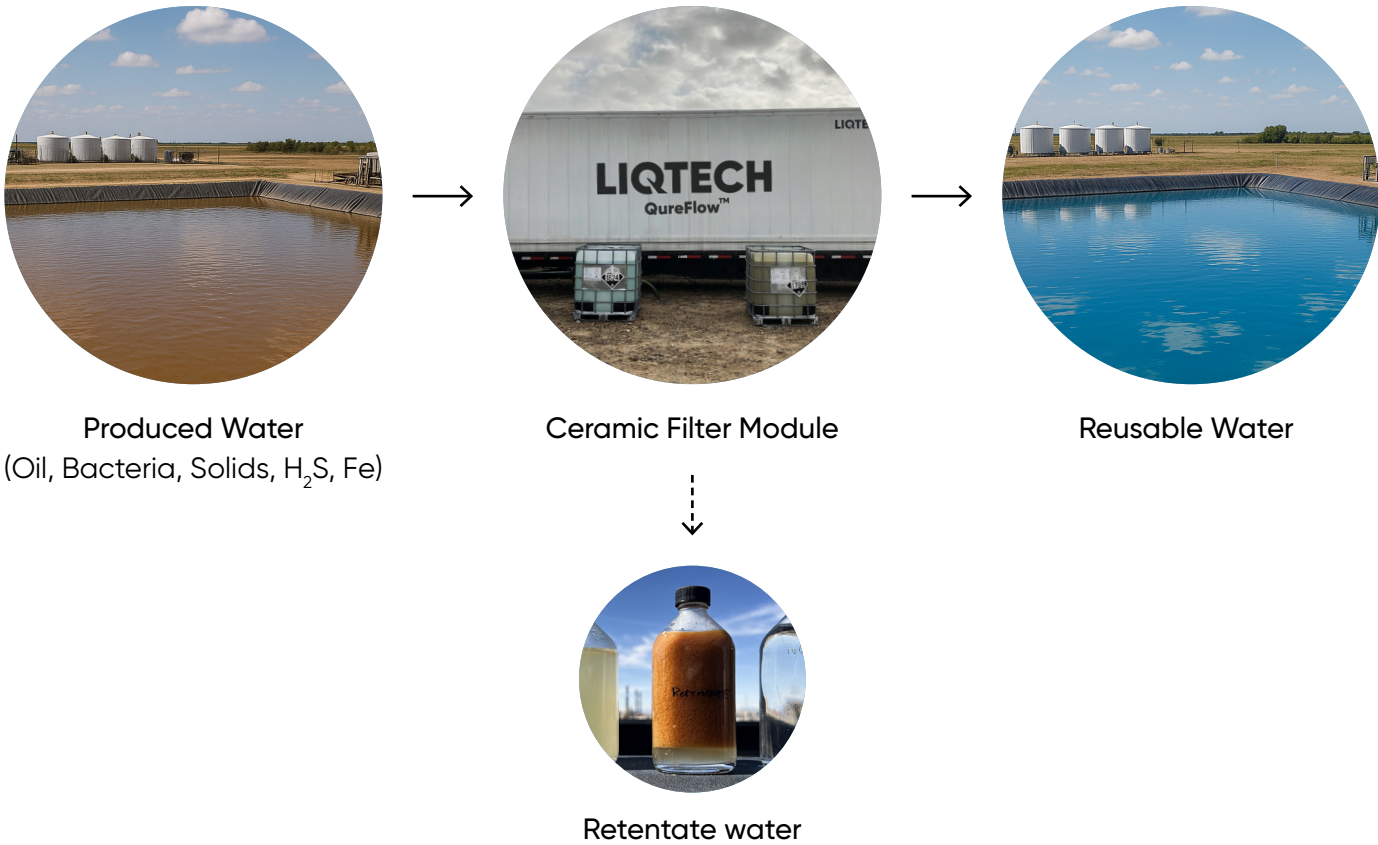
We know the challenge isn’t just treatment – it’s about reliability, predictability, and trust.

That’s why LiqTech developed QureFlow™, designed specifically for the realities of produced water:

QureFlow™ acts as an absolute barrier to oil, bacteria and particles – even during upset conditions. It delivers a TOTEX of less than \$0.10 per bbl of treated water and stays resilient where conventional technologies fail.

Once you’ve seen the challenges up close, you understand why we engineered a solution that doesn’t break down under real-world conditions.

- ✓ Absolute Barrier
- ✓ One-Step
- ✓ High Recovery
- ✓ Automated
- ✓ Low Manpower
- ✓ Resilient



Performance You Can Measure. Results You Can Trust.

TSS < 1.0 mg/L

Total Suspended Particles

OiW < 0.5 mg/L

Free Oil & Grease

> 99% Removal

of particles > 0.5 micron

Zero biocide needed

all bacteria (SRB/APB) removed

Removal of Fe & H₂S

with chemical pretreatment

Prove the ROI of Your Water Strategy

Performance and savings are measurable. This ceramic solution simplifies produced water treatment into one step, lowering operating costs and ensuring stable quality – all while supporting ESG goals.

In fact, LiqTech technology is already proven in the field. With more than 180 systems installed worldwide, our membranes handle large daily volumes of oil and TSS – running reliably and with minimal operator attention.

Eagleford Basin, TX, US	5,000 bbl/d
Eagleford Basin, TX, US	2x 10,000 bbl/d
DJ Bassin, CO, US	1,500 bbl/d
Kuwait	3,000 bbl/d
Saudi Arabia	5,000 bbl/d



Raw water

Feed water

Retentate water

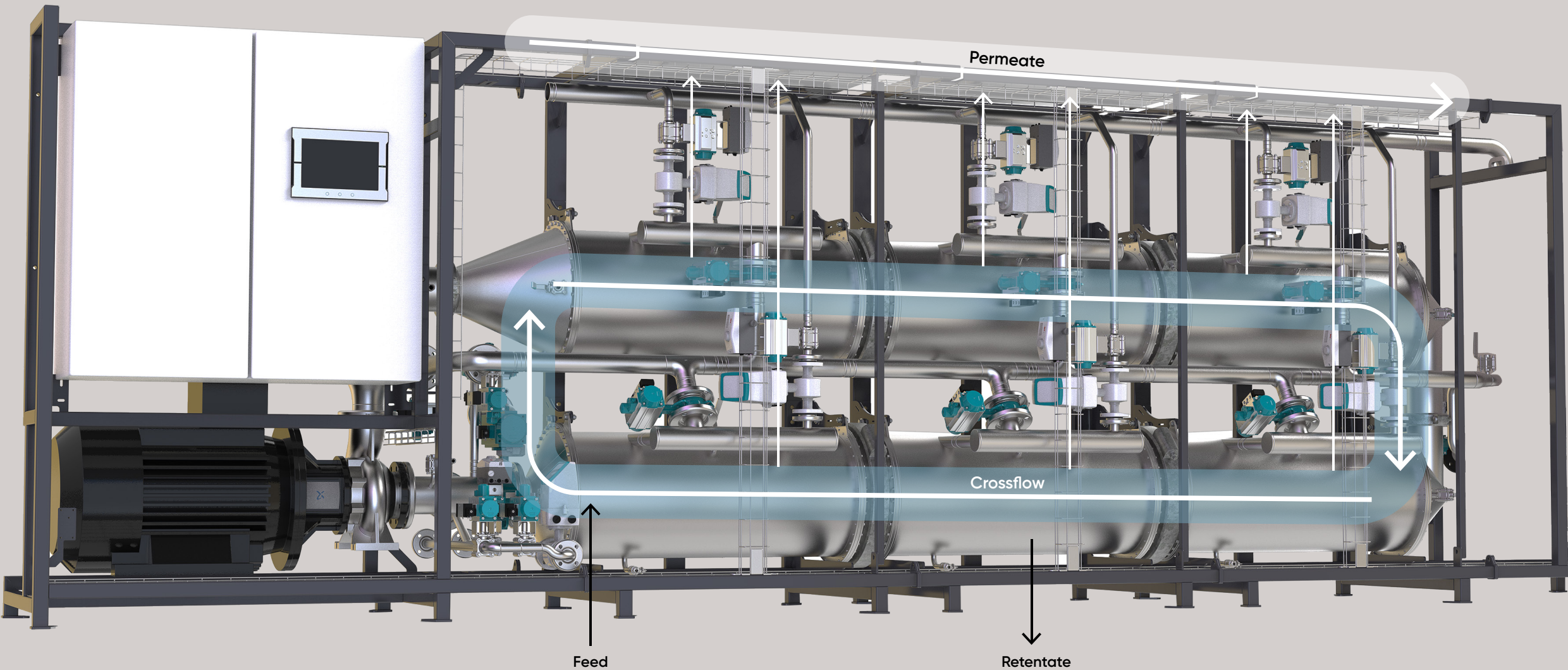
Permeate water

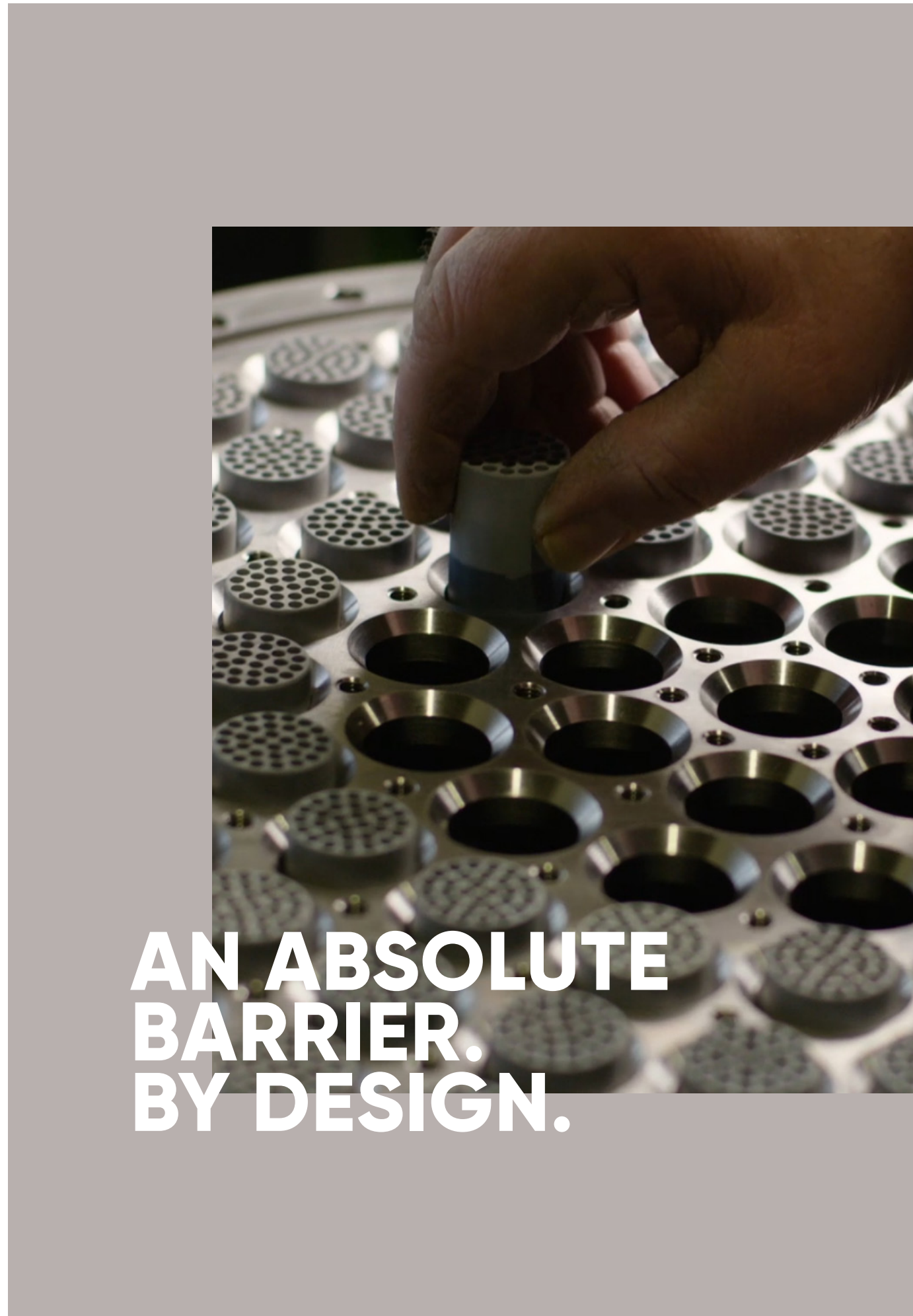
Produced Water Changes. Your Clean Water Shouldn't.

QureFlow™ is engineered for the harshest conditions, delivering constant high-quality permeate regardless of feedwater variations. Its patented SiC membranes act as an absolute barrier, ensuring stable performance even during upset conditions.

A System That Changes the equation:

- Absolute barrier to oil, bacteria & particles
- Minimal chemical use – maximum downstream protection
- Resilient in extreme feedwater conditions (high TDS, high temp, high oil spikes)
- Automated & remote operation via SCADA/VPN – minimal manpower
- Compact, containerized format – rapid deployment and mobility
- Proven TOTEX of less than \$0.10 per bbl of treated water





**AN ABSOLUTE
BARRIER.
BY DESIGN.**

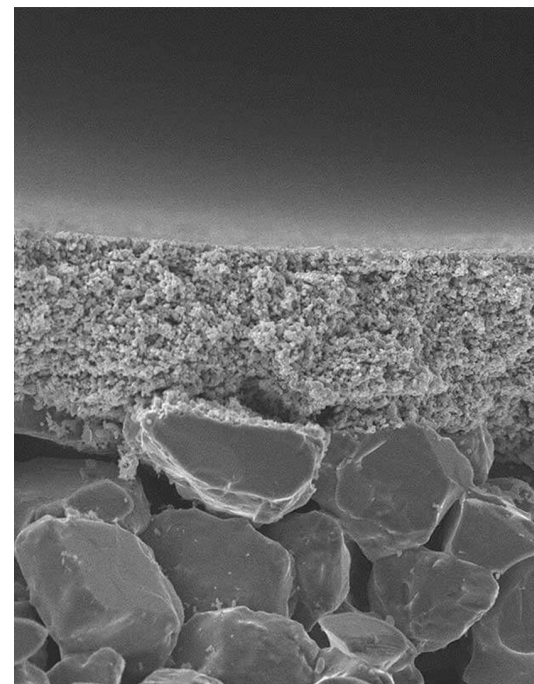
High-End Ceramic Membrane Technology, Simplified for Produced Water Filtration

At the core is a state-of-the-art ceramic membrane (0.06 micron, zirconia-on-silicon carbide). It consistently delivers high flux and separation performance – even with fluctuating feed quality.

QureFlow™ is designed for maximum performance:

- Achieves high capacity and stable throughput
- Cleans in-place easily using any chemistry, like acid, alkali, chlorine, or peroxide
- Remote monitoring and diagnostics via SCADA/VPN
- Operates at pH 0–14 and up to 175 F

Works >130°F where DAF struggles.
Stronger performance at higher temperatures.



Ready to Lead with Water

Let's talk. Book a technical discovery session with a LiqTech engineer today. We'll walk you through:

- ✓ Customized system sizing and recovery projections
- ✓ OPEX vs. your current treatment setup
- ✓ Compliance and ESG alignment
- ✓ Deployment options (fixed, mobile, modular)

sales@liqtech.com
www.liqtech.com

Book Your Meeting and Unlock Water Savings →

Turn Produced Water into an Advantage

