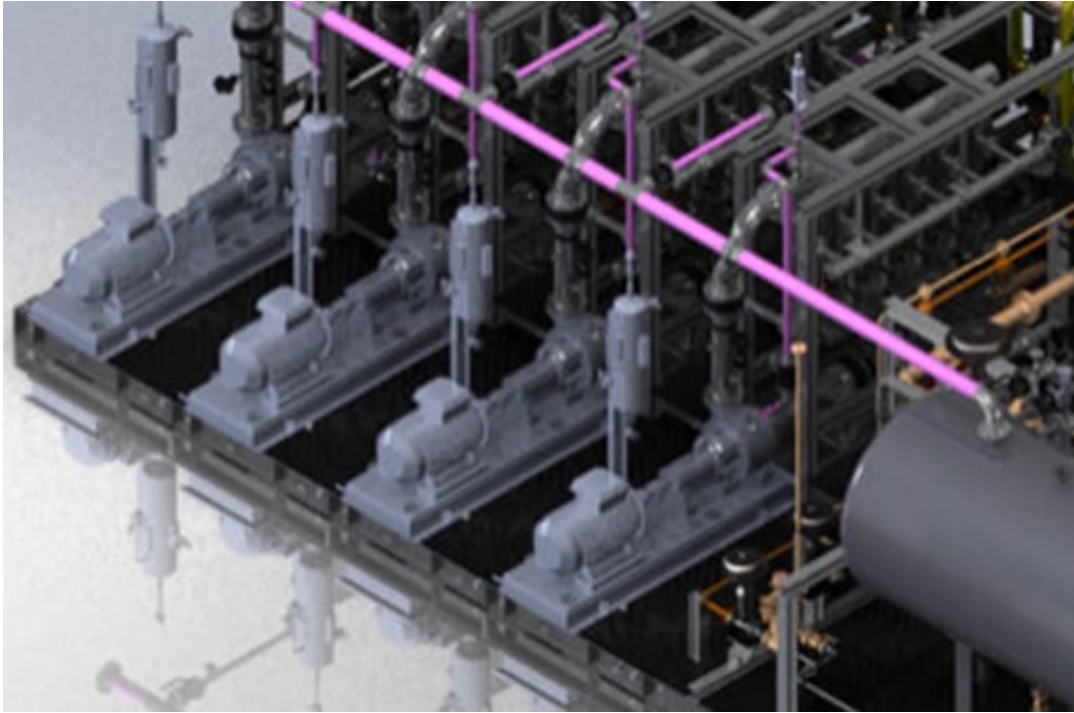


A large offshore oil rig is shown against a clear blue sky. The rig is a complex of steel structures, including a tall derrick in the center and various platforms and pipes. A red crane is visible on the left side. The rig is supported by yellow legs that extend into the blue ocean. The text "PRODUCED WATER TREATMENT OFFSHORE DISCHARGE CASE" is overlaid in white, bold, sans-serif font on the lower half of the image.

**PRODUCED WATER
TREATMENT
OFFSHORE
DISCHARGE CASE**



Produced Water treatment Offshore discharge

LiqTech silicon carbide membrane technology removes Oil in Water (OiW) to below OSPAR discharge limits (30 mg/L), thus achieving safe environmental discharge.

The Case

Offshore oil & gas production often includes produced water treatment with the objectives to recover oil and gas, while cleaning the "produced water" before discharging it to the sea. LiqTech SiC membrane technology ensures safe overboard discharge.

The Solution

LiqTech supplied SiC membranes, engineering, and commissioning of the full-scale system. The fully automated system has integrated backflush and chemical cleaning in place.

The produced water in this case is a gas condensate characterized by a relatively high concentration of corrosion inhibitors. Conventional water treatment technologies, such as Hydro Cyclones and flotation units (DAF/IGF) have certain limitations in regards to solids (TSS) and oil (OiW) removal. The high concentration of corrosion inhibitors created an oil emulsion and increased the viscosity that challenged the existing produced water treatment system.

The goal was to provide a polishing treatment step downstream of the existing installation to secure full OSPAR compliance. LiqTech worked closely with our partner and end-user, which decided for the LiqTech SiC membrane technology from over +10 competing technologies.



LiqTech System Design

Materials and Components

The UF membranes are made from silicon carbide material which proves to be extremely robust with high permeability and stable flux. Further, the membranes are chemically inert and very temperature resistant. Membrane housings and all piping are made of duplex steel. The individual trains can be cleaned one at the time in order to maintain capacity on the remaining membranes in operation

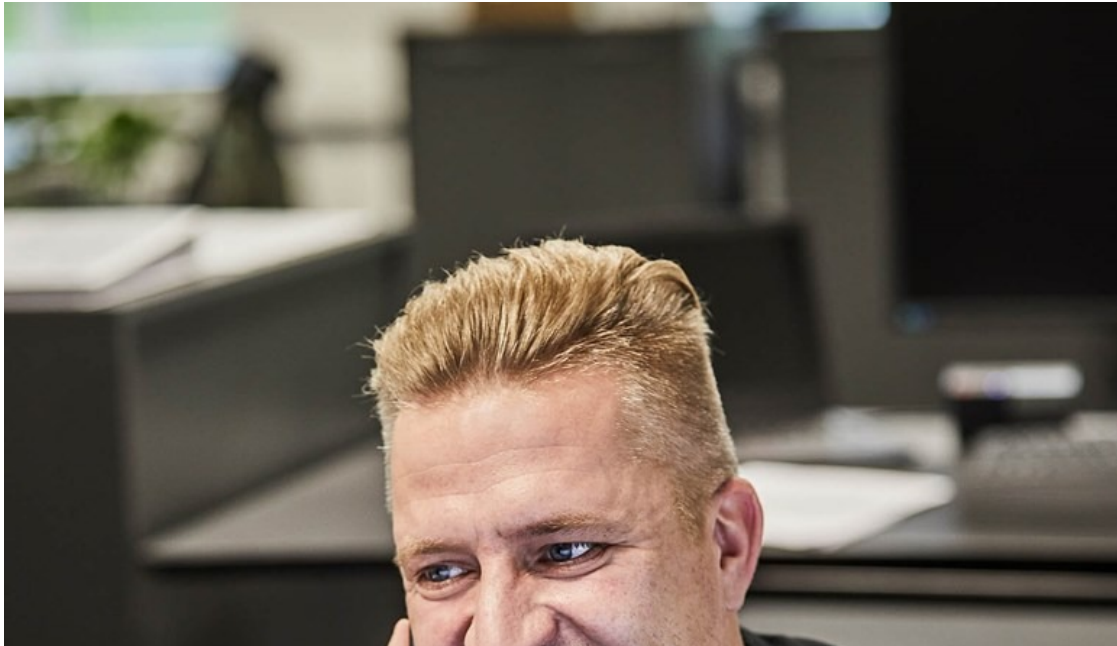
Operational performance

The SiC membrane system has shown a very satisfying process robustness and treated water quality. The system is operating at typical values shown in the picture.

Table: Operational performance of SiC membrane system for Produced Water treatment.

* Normal treated water quality has OiW content less than 5ppm, the higher value is due to effects of the corrosion inhibitor.

PARAMETER	UNIT	VALUE (MIN)	VALUE (MAX)
Flow	m ³	15	30
Oil In Water	ppm	~50 (feed)	~15* (out)
TMP	bar	0.10	0.50
Permeability	L/m ² .hour.bar)	200	1,000



Do you need more information?

If need any more information or help regarding produced water, please do not hesitate to contact us.

First Name*

Last Name*

Company Name

Email*

Phone number

Message

Don't miss out on news and inspiration for a more sustainable future.

Sure, sign me up for LiqTech's newsletter too!

In order to send you product-related content, we have to store and process your data. You may, at any time, withdraw your consent. If you want to know more about how we store and process your data, please visit our privacy policy.

I agree to let LiqTech store and process my data.*

SEND

We are here to help you



Kenneth Højrup Johansen

Strategic Alliance Director

Phone: +45 2055 5217

khj@liqtech.com

LiqTech Water A/S

Phone: +45 7020 7258

water@liqtech.com

<https://liqtech.com/water>



Casper Hadsbjerg

Chief Commercial Officer, CCO

Phone: +45 3115 1410

cah@liqtech.com

LiqTech Water A/S

Phone: +45 7020 7258

water@liqtech.com

<https://liqtech.com/water>